

ID	Category	Hotel	Approximate price per night
1	*****	Radisson Blu Centrum	203€ – 231€
2	*****	Hotel Bristol	182€ – 1886€
3	*****	Warsaw Marriott	171€ – 969€
4	*****	Sheraton Warsaw	166€ – 232€
5	*****	Sofitel Warsaw Victoria	134€ – 1848€
6	*****	InterContinental Warszawa	117€ – 281€
7	*****	The Westin Warsaw	76€ – 173€
8	****	Polonia Palace	180€ – 508€
9	****	Hilton Warsaw Hotel And Convention Center	143€ – 1702€
10	****	Mercure Warszawa Centrum	136€ – 206€
11	****	Mercure Grand Warszawa	104€ – 174€
12	****	Novotel Warszawa Centrum	97€ – 138€
13	***	Metropol	84€ – 139€
14	***	Gromada Centrum Dom Chłopa	44€ – 96€
15	**	Harenda	72€ – 106€
16	**	Campanile	from 70€
17	*	Logos	31€ – 76€
18	Apartament	Mamaison Residence Diana Warsaw	188€ – 377€
19	Apartament	Apartamenty Zgoda Warszawa by DeSilva	67€ – 113€
20	Apartament	Design City Apartments	from 58€
21	Apartament	Residence St. Andrew's Palace	51€ – 171€
22	Apartament	Capital Apartments	51€ – 85€
23	Apartament	P&O Apartments	from 39€
24	Apartament	Apartamenty Dobranoc	from 30€
25	Apartament	Na Skarpie	23€ – 58€
26	Pokoje gościnne	Castle Inn	101€ – 137€
27	Pokoje gościnne	Dom Literatury	51€ – 118€
28	Pokoje gościnne	Chmielna Guest House	44€ – 48€
29	Pokoje gościnne	Helvetia Plus	34€ – 92€
30	Hostel	Puffa Hostel Lux	33€ – 67€
31	Hostel	Chmielna 5 Hostel	13€ – 39€
32	Hostel	Camera Hostel	12€ – 46€
33	Hostel	Fest Hostel	12€ – 37€
34	Hostel	Helvetia Hostel	11€ – 91€
35	Hostel	Tatamka Hostel	11€ – 60€
36	Hostel	Kanonia Hostel	10€ – 65€
37	Hostel	New World St. Hostel	10€ – 40€
38	Hostel	Aga Hostel	9€ – 30€
39	Hostel	Oki Doki Hostel	7€ – 36€

Exchange Rate: 1PLN = 4,33€

HOTEL RADISSON BLU CENTRUM

Contact:

Grzybowska 24

phone: +48 22 321 88 88

info.warsaw@radissonblu.com

www.radissonblu.com

Overview & prices:

- Standard Room – King/Twin/Queen Bed, 28m² – from 840PLN (194€)
- Business Class Room, 28m² – from 1000PLN (231€), breakfast included

Free high-speed wireless Internet, coffee and tea making facilities, individual climate control and in-room safe.

Facilities for disabled guests.

Pets allowed.

Check in: 15:00 – 00:00 hours. Check out: 07:00 – 12:00 hours.

Photos:



Map:



Distance to University of Warsaw – 1580m

HOTEL BRISTOL

Contact:

Krakowskie Przedmieście 42/44

phone: +48 22 551 10 00

bristol@luxurycollection.com

www.hotelbristolwarsaw.pl

Overview & prices:

- Classic room – Queen Bed, 24-31m² – from 790PLN (182€)
- Executive room – King Bed, 29-37m² – from 960PLN (222€)
- Executive room – 2 Single Beds, 28-44m² – from 960PLN (222€)
- Bristol Executive room – King Bed, 36-39m² – from 1270PLN (293€)
- Junior Suite – King Bed, 41-51m² – from 1490PLN (344€)
- Bristol Suite – King Bed, 47-54m² – from 1590PLN (367€)
- Grand Suite – King Bed, 50-57m² – from 1840PLN (425€)
- Deluxe Suite – King Bed, 91-99m² – from 5790PLN (1337€)
- Paderewski Suite – King Bed, 110m² – from 7790PLN (1799€)

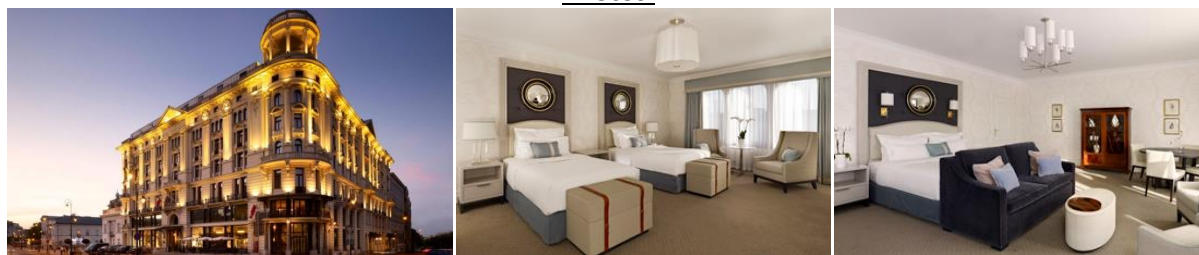
Marble Bathroom, Bathrobes and Slippers, Individual Climate Control, In-Room Safe, Mini Bar, LCD Television, Multilingual TV Programs, iPod Docking Station, Full-Length Mirror.

Facilities for disabled guests.

Pets allowed.

Check in: 2:00 pm. Check out: 12:00 pm.

Photos:



Map:



Distance to University of Warsaw – 400m

HOTEL WARSAW MARRIOTT

Contact:

Aleje Jerozolimskie 65/79

phone: +48 22 630 63 06

mail@marriotthotel.com

www.warsawmarriott.pl

Overview & prices:

- Standard Room – King Bed/2 Single Bed, 28m² – from 739PLN (171€)
- Executive Room – King Bed/2 Single Bed, 28m² – from 859PLN (198€)
- Bi-Level Suite – King Bed, 40m² – from 949PLN (219€), breakfast included
- Corner Junior Suite – King Bed, 36m² – from 999PLN (231€), breakfast included
- Business Suite – King Bed, 60m² – from 1119PLN (258€), breakfast included
- Luxury Suite – King Bed, 78m² – from 1239PLN (286€), breakfast included
- Presidential Suite – King Bed, 120m² – from 4000PLN (924€), breakfast included

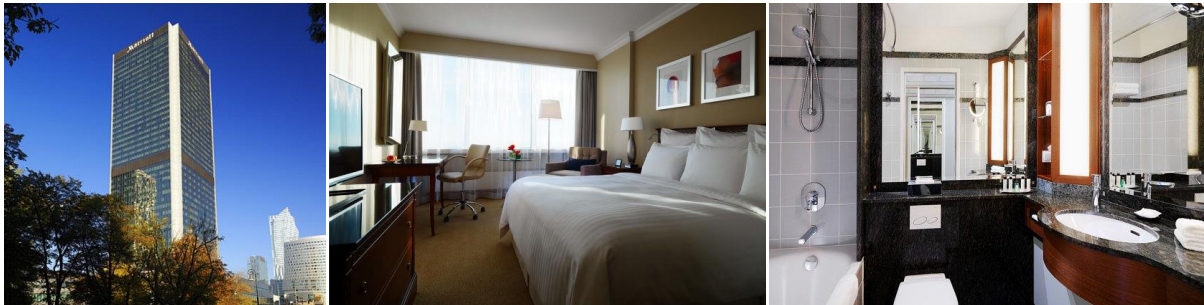
Wi-Fi, coffee and tea making facilities, phones, outlet with dual voltage adaptors, hair dryer, iron and ironing board, safe in room, mini-bar, LCD TV, air-conditioned.

Facilities for disabled guests.

Pets allowed.

Check in: 4:00 pm. Check out: 12:00 pm.

Photos:



Map:



Distance to University of Warsaw – 2020m

HOTEL SHERATON WARSAW

Contact:

Bolesława Prusa 2

phone: +48 22 450 61 00

reservation.warsaw@starwoodhotels.com

www.sheraton.pl

Overview & prices:

- Classic Room – King Bed/2 Single Beds, 30-40m² – from 720PLN (166€)
- Deluxe Room – King Bed/2 Single Beds, 30-40m² – from 840PLN (194€)
- Business Room – King Bed, 30-50m² – from 860PLN (199€)
- Sheraton Club Room – King Bed/2 Single Beds, 30-40m² – from 980PLN (226€)
- Junior Suite – King Bed, 30-50m² – from 1005PLN (232€)

In every room: WiFi and wired Internet access, LCD TV, spacious bathroom, Individual Climate Control, coffee and tea making facilities, mini-bar, ironing board and iron, in-room safe.

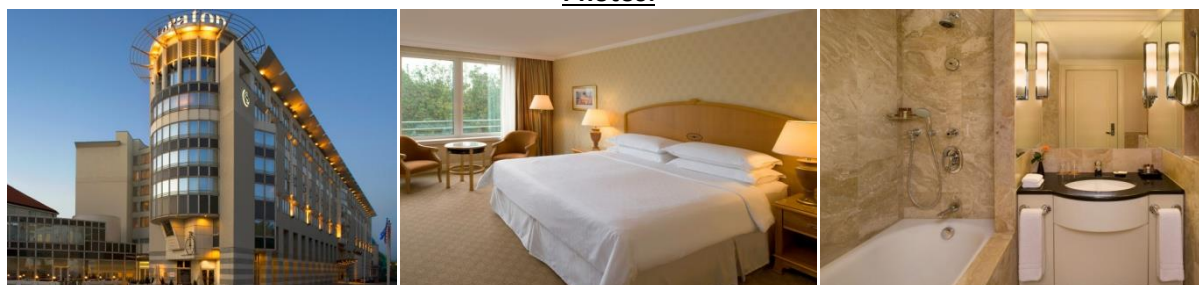
Guests have complimentary access to the Sheraton Fitness.

Facilities for disabled guests.

Pets allowed.

Check in: 2:00 pm. Check out: 12:00 pm.

Photos:



Map:



Distance to University of Warsaw – 1420m

HOTEL SOFITEL WARSAW VICTORIA

Contact:

Królewska 11

phone: +48 22 657 80 11

H3378@sofitel.com

www.accorhotels.com

Overview & prices:

- Classic Room – King Bed/2 Single Beds, 27m² – from 582PLN (134€)
- Superior Room – King Bed/2 Single Beds, 27m² – from 646PLN (149€)
- Luxury Room – King Bed, 27m² – from 750PLN (173€)
- Classic Junior Suite – King Bed/2 Single Beds, 40m² – from 722PLN (167€)
- Junior Suite – King Bed, 40m² – from 1032PLN (238€)
- Prestige Suite – King Bed, 55m² – from 1039PLN (240€)
- Opera Suite – King Bed, 83m² – from 1558PLN (360€)
- Presidential Suite – King Bed, 122m² – from 8000PLN (1848€)

In every room: bathroom, hair dryer, LCD TV, Microwave, minibar, safe deposit box, free WIFI, air conditioning.

Facilities for disabled guests.

Pets allowed.

Check in: 2:00 pm. Check out: 12:00 pm.

Photos:



Map:



Distance to University of Warsaw – 480m

HOTEL INTERCONTINENTAL WARSZAWA

Contact:

Emilii Plater 49

phone: +48 22 328 88 88

warsaw@ihg.com

www.intercontinental.com

Overview & prices:

- Standard Room – King Bed, 34m² – from 506PLN (117€)
- Deluxe Room – King Bed, 33-44m² – from 624PLN (144€)
- Club Lounge Access Room – King Bed – from 741PLN (177€)
- Junior Suite – King Bed, 68m² – from 981PLN (227€)
- Executive Junior Suite Club – King Bed, 68m² – from 1216PLN (281€)

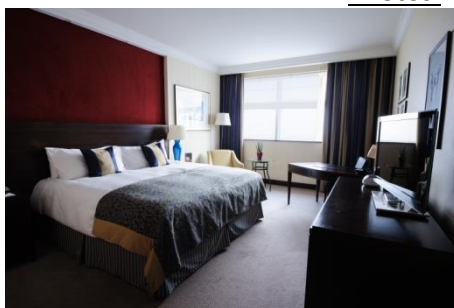
Wi-Fi, Coffee and tea making facilities, mini-bar, Bathrobe and slippers, Hairdryer, cosmetics, Ironing kit, Shoe polish kit, Led TV and DVD, Air Condition and Safe.

Facilities for disabled guests.

Pets allowed.

Check in: 2:00 pm. Check out: 12:00 pm.

Photos:



Map:



Distance to University of Warsaw – 1550m

HOTEL THE WESTIN WARSAW

Contact:

Aleja Jana Pawła II 21
phone: +48 22 450 80 00

warsaw@westin.com

www.westin.pl

Overview & prices:

- Classic Room – King Bed, 27m² – from 330PLN (76€)
- Deluxe Room – King Bed/2 Single Beds, 27m² – from 455PLN (105€)
- Corner Room – King Bed, 20-30m² – from 470PLN (109€)
- Superior City Room – King Bed/2 Single Beds, 27m² – from 505PLN (117€)
- Executive Room – King Bed/2 Single Beds, 27m² – from 590PLN (136€), breakfast included
- Executive Corner Room – King Bed/2 Single Beds, 27m² – from 625PLN (144€), breakfast included
- Deluxe Suite – King Bed, 54m² – from 750PLN (173€)

Wi-Fi and wired Internet Access, coffee and tea making facilities, mini-bar, iron and ironing board, flat TV with satellite channels, in-room movies, individually controlled air conditioning and personal safe with possibility to recharge a laptop.

Facilities for disabled guests.

Pets allowed.

Check in: 2:00 pm. Check out: 12:00 pm.

Photos:



Map:



Distance to University of Warsaw – 1680m

HOTEL POLONIA PALACE

Contact:

Aleje Jerozolimskie 45
phone: +48 22 318 28 00
poloniapalace@syrena.com.pl
www.poloniapalace.com

Overview & prices:

- Standard Room – King Bed/2 Twin Beds, 20m² – from 780PLN (180€)
- Superior Room – King/Twin Bed, 25m² – from 860PLN (199€)
- Deluxe Business Room – King Bed, 30m² – from 940PLN (217€)
- Executive Room – King Bed, 45m² – from 1020PLN (236€)
- Junior Suite – King Bed, 50m² – from 1260PLN (291€), breakfast included
- Suite – King Bed, 55m² – from 1500PLN (346€), breakfast included
- English Apartment – King Bed, 115m² – from 2200PLN (508€), breakfast included

Internet, complimentary Fitness Center (work-out area + 2 separate saunas), laptop size in-room safe, Air Conditioned, Cable TV, In Room Movies, Hairdryer In Room, Radio.

Facilities for disabled guests.

Pets allowed.

Check in: 2:00 pm. Check out: 12:00 pm.

Photos:



Map:



Distance to University of Warsaw – 1620m

HILTON WARSAW HOTEL AND CONVENTION CENTER

Contact:

Grzybowska 63

phone: +48 22 356 55 55

reservation.warsaw@hilton.com

www.hiltonwarsaw.pl

Overview & prices:

- King Hilton Guest Room – 30m² – from 619PLN (143€)
- Twin Hilton Guest Room – 30m² – from 619PLN (143€)
- King Hilton Deluxe Room – 31m² – from 699PLN (161€)
- King Hilton Deluxe Plus Room – 35m² – from 739PLN (171€)
- King Executive Room – 30m² – from 859PLN (198€)
- Twin Executive Room – 30m² – from 859PLN (198€)
- King Executive Plus Room – from 909PLN (210€)
- Executive Corner Suite – 64m² – from 1469PLN (339€)
- Presidential Suite – 130m² – from 7370PLN (1702€)

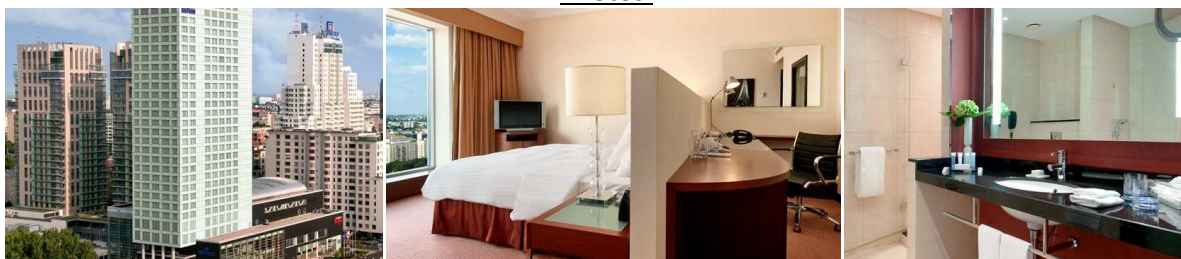
Internet, Safe, Air Conditioning, In-Room Movie Channel, LCD Flat Panel TV, Radio, Telephone, Hairdryer, Bath Slippers, Bathrobe, Iron, Ironing Board, Tea/Coffee Making Facilities.

Facilities for disabled guests.

Pets allowed.

Check in: 4:00 pm. Check out: 12:00 pm.

Photos:



Map:



Distance to University of Warsaw – 2400m

HOTEL MERCURE WARSZAWA CENTRUM

Contact:

Złota 48/54

phone: +48 22 697 39 99

h3385@accor.com

www.mercure.com

Overview & prices:

- Standard Room – King Bed/2 Single Beds – from 590PLN (136€)
- Standard Room – 1 Single Bed – from 590PLN (136€)
- Superior Room – 2 Single Beds – from 740PLN (171€)
- Superior Room – Queen Bed – from 740PLN (171€)
- Apartment – King Bed – from 890PLN (206€)

Internet, phone, trouser press in room, safe deposit box in room, mini-bar, Web TV, radio, air conditioning.

Facilities for disabled guests.

Pets allowed.

Check in: 2:00 pm. Check out: 12:00 pm.

Photos:



Map:



Distance to University of Warsaw – 1840m

HOTEL MERCURE GRAND WARSZAWA

Contact:

Krucza 28

phone: +48 22 583 21 00

h3384@accor.com

www.mercure.com

Overview & prices:

- Standard Room – 1 Single Bed – from 452PLN (104€)
- Standard Room – 2 Single Bed – from 477PLN (110€)
- Superior Room – King Bed – from 527PLN (139€)
- Privilege Room – King Bed – from 602PLN (139€)
- Superior Room by Zbyszek – Jazz Room, from 36m² – King Bed – from 602PLN (139€)
- Superior Room by Edyta – Tea Room, from 36m² – King Bed – from 602PLN (139€)
- Superior Room by Gawel – Grand Hotel Room, from 36m² – King Bed – from 602PLN (139€)
- Deluxe Apartment – from 752PLN (174€)

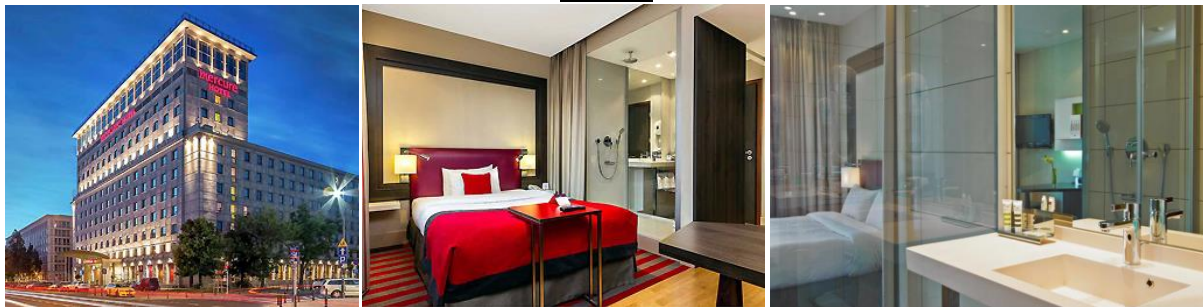
Internet, Phone, Outlet RJ45 and RJ11, Coffee and tea making facilities, Hair dryer, Safe, mini-bar, TV, Radio, Air-conditioned.

Facilities for disabled guests.

Pets allowed.

Check in: 2:00 pm. Check out: 12:00 pm.

Photos:



Map:



Distance to University of Warsaw – 1580m

HOTEL NOVOTEL WARSZAWA CENTRUM

Contact:

Marszałkowska 94/98
phone: +48 22 596 00 00

h3383@accor.com

www.novotel.com

Overview & prices:

- Standard Room – 2 Twin Beds – from 419PLN (97€)
- Standard Room – King Bed – from 419PLN (97€)
- Superior Room – King Bed – from 459PLN (106€)
- Executive Room – King Bed – from 509PLN (118€)
- Family Apartment – from 565PLN (130€)
- Junior Apartment – from 599PLN (138€)

Internet, safe deposit box in room, mini-bar, TV, air conditioning, hair dryer.

Facilities for disabled guests.

Pets allowed.

Check in: 2:00 pm. Check out: 12:00 pm.

Photos:



Map:



Distance to University of Warsaw – 1590m

HOTEL METROPOL

Contact:

Marszałkowska 99a

phone: +48 22 325 31 00

hotel.metropol@syrena.com.pl

www.hotelmetropol.com.pl

Overview & prices:

- Standard Room – Double Bed, 16m² – from 363PLN (84€)
- Standard Twin Room – 2 Twin Beds, 20m² – from 400PLN (92€)
- Executive Room – Double Bed/2 Twin Beds, 20m² – from 483PLN (112€)
- Junior Suite – King Bed/2 Twin Beds, 42m² – from 543PLN (125€)
- Suite – King Bed/2 Twin Beds, 45m² – from 603PLN (139€)

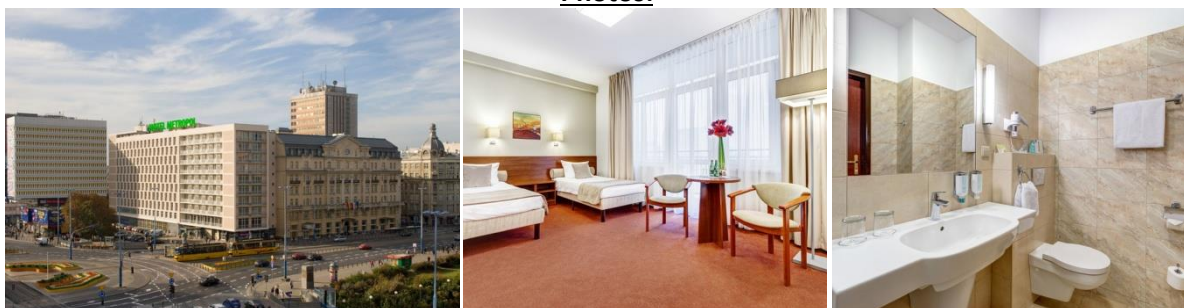
Internet, Safe, Cable TV, Hairdryer In Room.

Facilities for disabled guests.

Pets allowed.

Check in: 2:00 pm. Check out: 12:00 pm.

Photos:



Map:



Distance to University of Warsaw – 1610m

HOTEL GROMADA CENTRUM DOM CHŁOPA

Contact:

Powstańców Warszawy Square 2

phone: +48 22 582 94 00

warszawahotel.centrum@gromada.pl

www.gromada.pl

Overview & prices:

- Single Standard Room – from 189PLN (44€)
- Single Business Room – from 234PLN (54€)
- Single Business Plus Room – from 270PLN (62€)
- Double/Twin Standard Room – from 189PLN (44€)
- Double/Twin Business Room – from 234PLN (54€)
- Twin Business Plus Room – from 270PLN (62€)
- Double Business Plus Room – from 234PLN (54€)
- Room for disabled guests – from 234PLN (54€)
- Studio Room – from 243PLN (56€)
- Standard Suite – from 324PLN (75€)
- Business Suite – from 369PLN (85€)
- Business Plus Suite – from 414PLN (96€)

Internet, LCD TV, bathroom, Telephone.

Facilities for disabled guests.

Pets allowed.

Check in: 2:00 pm. Check out: 12:00 pm.

Photos:



Map:



Distance to University of Warsaw – 790m

HARENDA

Contact:

Krakowskie Przedmieście 4/6

phone: +48 22 826 00 71

rezerwacja@hotelharenda.com.pl

www.hotelharenda.com.pl

Overview & prices:

- Single room – from 310PLN (74€)
- Double room – from 340PLN (81€)
- Suite for two – from 460PLN (110€)

In all the rooms, there is a bathroom, openable windows, central heating, telephone, satellite TV as well as wireless Internet connection.

Hairdryers, irons and ironing boards are available on request.

Check in: 2:00 pm. Check out: 12:00 pm.

Photos:



Map:



Distance to University of Warsaw – 80m

HOTEL CAMPANILE

Contact:

Towarowa 2

phone: +48 22 582 72 00

warszawa@campanile.com.pl

www.campanile.com.pl

Overview & prices:

- Room – Double Bed – from 305PLN (70€)
- Twin Room – 2 Twin Beds – from 305PLN (70€)

Internet, Air Conditioning, Ironing facilities at the front desk, TV, coffee and tea making facilities, Facilities for disabled guests.

Pets allowed.

Check in: 2:00 pm. Check out: 12:00 pm.

Photos:



Map:



Distance to University of Warsaw – 300m

HOTEL LOGOS

Contact:

Wybrzeże Kościuszkowskie 31/33

phone: +48 22 625 51 85

rezerwacja@hotellogos.pl

www.hotellogos.pl

Overview & prices:

- Single room, with wash-hand basin – from 133PLN (31€)
- Double room, with wash-hand basin – from 168PLN (39€)
- Single room, with bathroom – from 194PLN (45€)
- Double room, with bathroom – from 238PLN (55€)
- Double room, with extension – from 328PLN (76€)

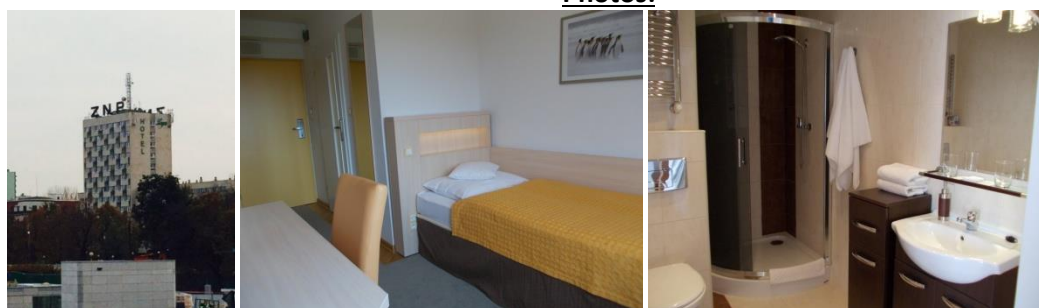
Internet, TV, radio.

Facilities for disabled guests.

Pets allowed.

Check in: 2:00 pm. Check out: 12:00 pm.

Photos:



Map:



Distance to University of Warsaw – 1390m

MAMAIISON RESIDENCE DIANA WARSAW

Contact:

Chmielna 13 A

phone: +48 22 505 91 00

reservations@mamaison.com

www.residencediana.com

Overview & prices:

- Superior Studio – King Bed, 48m² – from 813PLN (188€)
- One Bedroom Suite – King Bed, 55m² – from 897PLN (207€)
- Deluxe Grand Suite – King Bed, 80m² – from 1018PLN (235€)
- Exceptional Suite – King Bed, 90m² – from 1223PLN (282€)
- Mamaison Suite – King Bed, 100m² – from 1427PLN (330€)
- Diana Suite – King Bed, 102m² – from 1632PLN (377€)

Fully-equipped kitchen, cable TV, DVD player, HIFI, Internet wi-fi, Air conditioning, safe, a hair dryer, minibar.

Facilities for disabled guests.

Pets allowed.

Check in: 3:00 pm. Check out: 12:00 am.

Photos:



Map:



Distance to University of Warsaw – 880m

APARTAMENTY ZGODA WARSZAWA BY DESILVA

Contact:

Zgoda 6

phone: +48 22 553 61 00

zgoda@desilva.pl

www.desilva.pl

Overview & prices:

- Twin Room – 2 Twin Beds, 23m² – from 289PLN (67€)
- Family Room – from 389PLN (90€)
- Komfort – Queen Bed/2 Twin Beds + family sofa, 39-49m² – from 389PLN (90€)
- Superior – Queen Bed/2 Twin Beds, 39-49m² – from 489PLN (113€)

Internet wi-fi, air-conditioning, hair dryer.

Facilities for disabled guests.

Pets allowed.

Check in: 2:00 pm. Check out: 12:00 am.

Photos:



Map:



Distance to University of Warsaw – 940m

DESIGN CITY APARTMENTS

Contact:

Various locations
phone: +48 792 217 313
hotel@design-city.pl
www.design-city.pl

Overview & prices:

- Apartment – from 250PLN (58€)

Check in: 1:00 pm. Check out: 11:00 am.

Photos:



RESIDENCE ST. ANDREW'S PALACE

Contact:

Chmielna 30

phone: +48 22 826 46 40

info@residencestandrews.pl

www.residencestandrews.pl

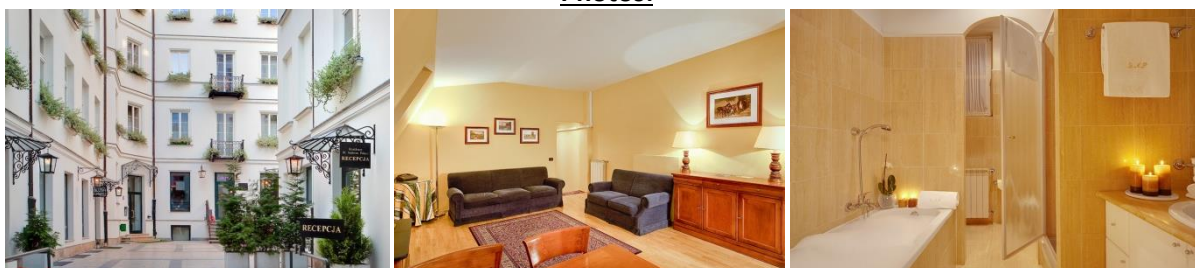
Overview & prices:

- Studio Apartment for 1 person, 27,5m² – from 220PLN (51€)
- Junior Apartment for 2 persons, 50m² – from 344PLN (79€)
- Superior Apartment for 3 persons, 68m² – from 559PLN (129€)
- Executive Apartment for 4 persons, 85m² – from 739PLN (171€)

Satellite TV, DVD, Internet, safe deposit box, security video, totally equipped kitchen.

Check in: 2:00 pm. Check out: 12:00 am.

Photos:



Map:



Distance to University of Warsaw – 1150m

CAPITAL APARTMENTS

Contact:

Various locations
phone: +48 22 635 38 38

info@capitalapart.pl

www.capitalapart.pl

Overview & prices:

- Studio Apartment – from 220PLN (51€)
- 2-Room Apartment – from 250PLN (58€)
- Premium Apartment – from 270PLN (62€)
- 3-Room Apartment – from 370PLN (85€)

Internet

Check in: 2:00 pm. Check out: 11:00 am.

Photos:



P&O APARTMENTS

Contact:

Various locations

phone: +48 508 135 995

booking@pandoapartments.eu

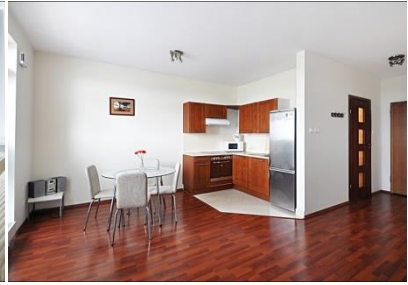
www.pandoapartments.com.pl

Overview & prices:

- Apartment – from 170PLN (39€)

Check in: 4:00 pm. Check out: 12:00 am.

Photos:



APARTMENTS DOBRANOC

Contact:

Various locations
phone: +48 503 066 458
kontakt@dobranoc.eu
www.dobranoc.eu

Overview & prices:

- Apartment – from 130PLN (30€)
- Check in: 2:00 pm. Check out: 11:00 am.

Photos:



APARTMENT NA SKARPIE

Contact:

Krakowskie Przedmieście 66
phone: +48 22 826 60 41 w. 168

administracja@cbr.net.pl

www.cbr.edu.pl

Overview & prices:

- Single Room – from 100PLN (23€)
- Twin/Double Room – from 200PLN (46€)
- Double Room for one person – from 200PLN (46€)
- Single Room + Twin/Double Room – from 250PLN (58€)
- Apartment – from 250PLN (58€)

Check in: 2:00 pm. Check out: 11:00 am.

Photos:



Map:



Distance to University of Warsaw – 830m

CASTLE INN

Contact:

Świętojańska 2

phone: +48 22 425 01 00

castleinn@castleinn.pl

www.castleinn.pl

Overview & prices:

- Single Room – from 439PLN (101€)
- Twin/Double Room – from 439PLN (101€)
- Double Deluxe Room – from 571PLN (132€)
- Family Room (3 persons) – from 593PLN (137€)

In every room: comfortable bathroom, LCD TV and complimentary access to Wi-Fi.

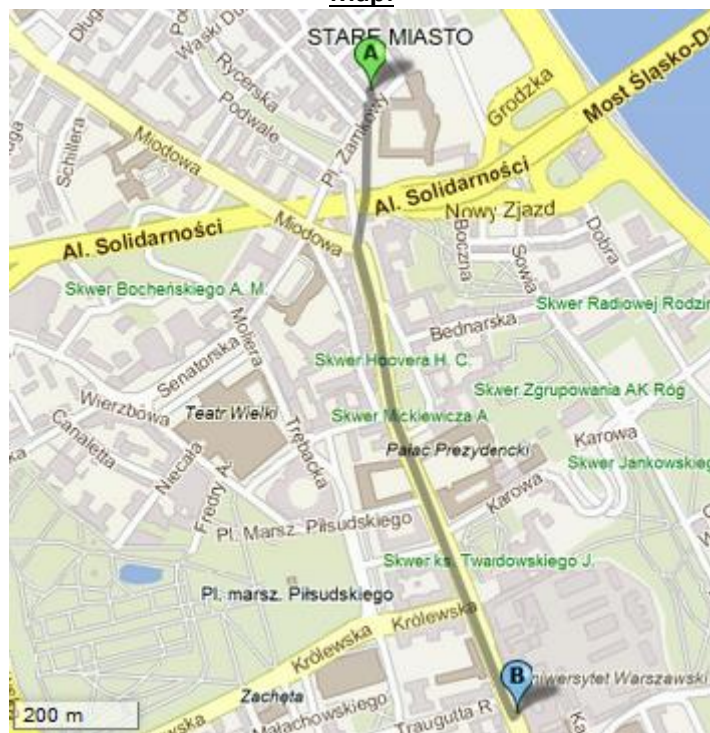
Pets allowed.

Check in: 2:00 pm. Check out: 12:00 pm.

Photos:



Map:



Distance to University of Warsaw – 1090m

DOM LITERATURY

Contact:

Krakowskie Przedmieście 87/89

phone: +48 22 828 39 20

fundacja@fundacjadel.com

eng.fundacjadel.com

Overview & prices:

- Single Room – from 220PLN (51€)
- Double Room – from 390PLN (90€)
- Apartment – from 510PLN (118€)

Breakfast included. Breakfast is served every morning in the hotel's lobby. There is a common area with coffee and tea making facilities.

It offers rooms with a flat-screen TV with satellite channels and a work desk.

All rooms have a private bathroom that comes with a shower and a hairdryer. There is a shared refrigerator in the corridor.

WiFi is available in all areas and is free of charge.

Pets allowed.

Check in: 2:00 pm. Check out: 12:00 pm.

Photos:



Map:



Distance to University of Warsaw – 980m

CHMIELNA GUEST HOUSE

Contact:

Chmielna 13 (Front desk: Nowy Świat 27)

Phone: +48 22 828 12 82

bb@chmielnabb.pl

www.chmielnabb.pl

Overview & prices:

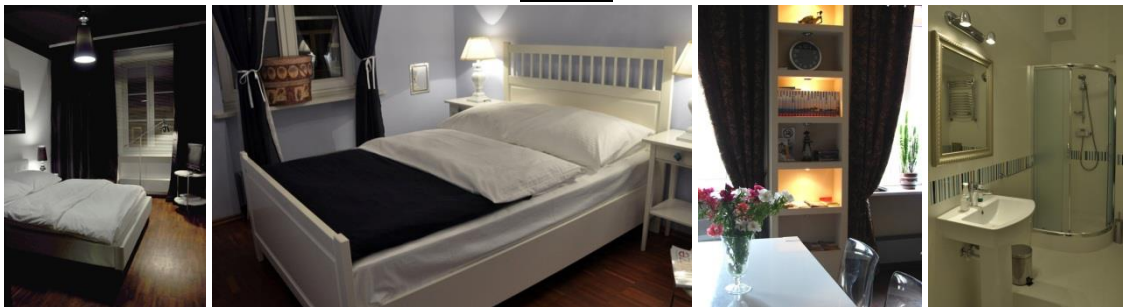
- Double Room – from 190PLN (44€)
- Double Room, with bathroom – from 210PLN (48€)
- Triple Room – from 210PLN (48€)

Kitchen and Wi-Fi.

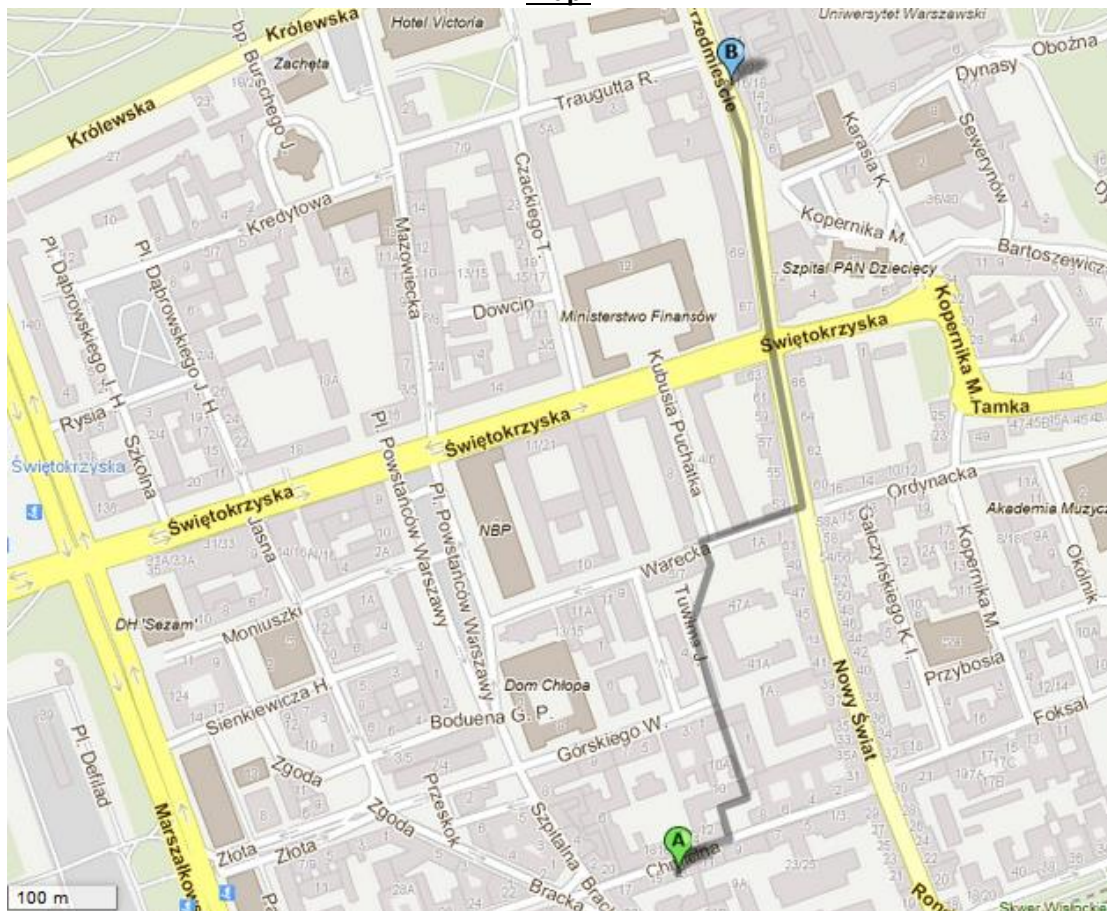
Pets allowed.

Check in: 3:00 pm. Check out: 11:00 am.

Photos:



Map:



Distance to University of Warsaw – 880m

HELVETIA PLUS

Contact:

Sewerynów 7

phone: +48 22 826 71 08

info@hostel-helvetia.pl

www.hostel-helvetia.pl

Overview & prices:

- Private twin room without bathroom – from 149PLN (34€)
- Private twin/double room with bathroom – from 169PLN (39€)
- Apartment 2-4 persons – from 400PLN (92€)

Basic breakfast included. All guests have access to the hostel's kitchen and the common room. WiFi is available in all areas and is free of charge. TV in every room. Hairdryer in every bathroom.

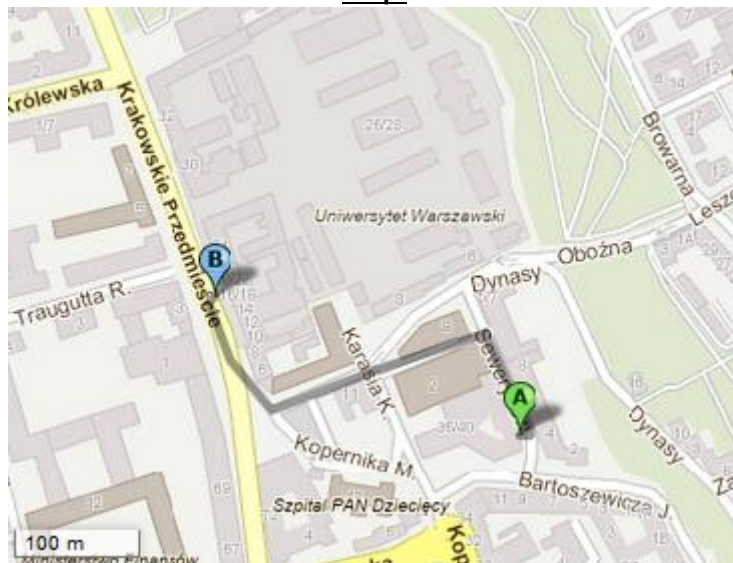
Pets allowed.

Check in: 3:00 pm. Check out: 11:00 am.

Photos:



Map:



Distance to University of Warsaw – 400m

PUFFA HOSTEL LUX

Contact:

Karowa 31

phone: +48 22 255 70 88

karowa31hostel@gmail.com

www.puffahostel.com

Overview & prices:

- Single Room – from 145PLN (33€)
- Single Room with bathroom – from 170PLN (39€)
- Twin Room – from 165PLN (38€)
- Twin Room with bathroom – from 190PLN (44€)
- Triple Room – from 170PLN (39€)
- Triple Room with bathroom – from 210PLN (48€)
- 4-bed-room – from 195PLN (45€)
- 4-bed-room with bathroom – from 230PLN (53€)
- 5-bed-room – from 230PLN (53€)
- 6-bed-room – from 255PLN (59€)
- 7-bed-room – from 275PLN (64€)
- 8-bed-room – from 290PLN (67€)

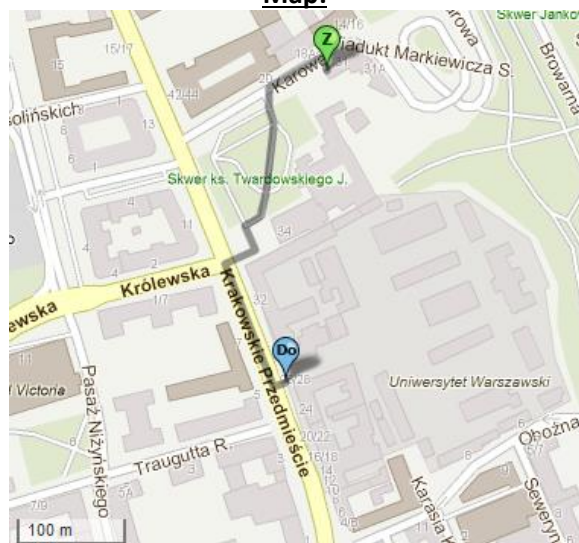
TV in every room. All guests have access to the hostel's kitchen and the 2 common rooms. Free Wireless Internet, iron and ironing board, hair dryer.

Check in: 2:00 pm. Check out: 11:00 am.

Photos:



Map:



Distance to University of Warsaw – 420m

CHMIELNA 5 HOSTEL

Contact:

Chmielna 5

Phone: +48 733 455 950

hostel@chmielna5.pl

www.chmielna5.pl

Overview & prices:

- Bed in Dormitory Room for 8 People – from 55PLN (13€)
- Bed in Dormitory Room for 6 People – from 55PLN (13€)
- Bed in Dormitory Room for 4 People – from 65PLN (15€)
- Bed in Room for 2 People – from 65PLN (15€)
- Double/Twin Room – from 170PLN (39€)

Breakfast included.

Fully equipped kitchen, Internet access (Wi-Fi).

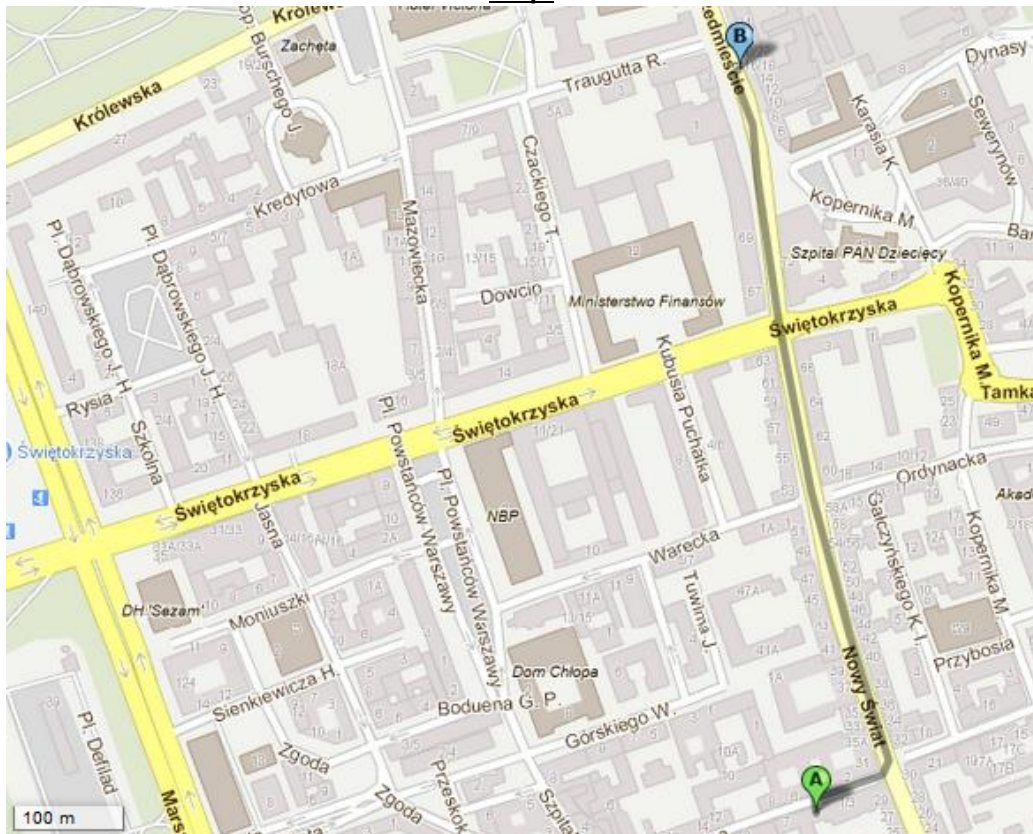
Pets allowed.

Check in: 15:00 pm. Check out: 11:00 am.

Photos:



Map:



Distance to University of Warsaw – 760m

CAMERA HOSTEL

Contact:

Jasna 22

Phone: +48 22 828 86 00

info@camerahostel.com

www.camerahostel.com

Overview & prices:

- Bed in Dormitory Room for 12 People – from 50PLN (12€)
- Bed in Dormitory Room for 10 People – from 50PLN (12€)
- Bed in Dormitory Room for 8 People – from 50PLN (12€)
- Bed in Dormitory Room for 6 People – from 55PLN (13€)
- Bed in Dormitory Room for 4 People – from 60PLN (14€)
- Single Room – from 100PLN (23€) (breakfast included)
- Double/Twin Room – from 150PLN (35€) (breakfast included)
- Double/Twin Room, with bathroom – from 180PLN (42€) (breakfast included)
- Triple Room – from 200PLN (46€) (breakfast included)

Fully equipped kitchen and free Wi-Fi. Books, board games.

Pets allowed.

Check in: 4:00 pm. Check out: 11:00 am.

Photos:



Map:



Distance to University of Warsaw – 810m

FEST HOSTEL

Contact:

Oboźna 7 flat 64
(entrance on the Sewerynow st.)

Phone: +48 506 285 286

info@festhostel.pl

www.festhostel.pl

Overview & prices:

- Bed in Dormitory Room for 12 People – from 50PLN (12€)
- Bed in Dormitory Room for 6 People – from 60PLN (14€)
- Twin Room – from 160PLN (37€)
- Twin Room for one person – from 140PLN (32€)

Bathroom and toilets are shared for all rooms.

Prices include breakFEST .

The following is available for Fest Hostel guests: kitchen, Wi-Fi in all rooms, board games, tourist guides, maps and books in different languages, safe deposit box.

Preferred check-in time: 11:00 am – 8:00 pm.

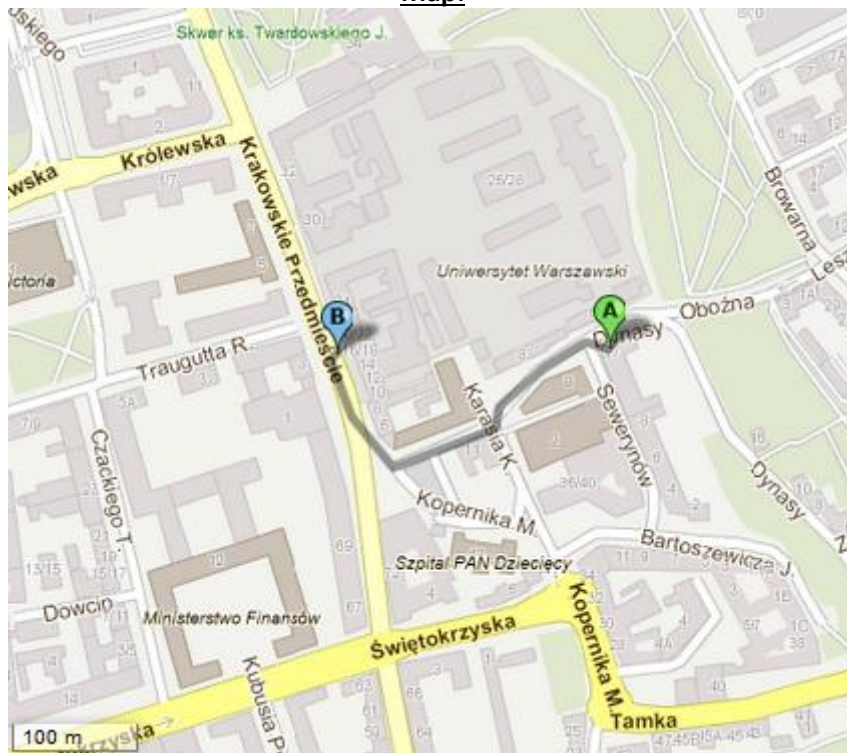
Early or late check-in is possible after arrangement.

Check out: 11:00 am.

Photos:



Map:



Distance to University of Warsaw – 330m

HELVETIA HOSTEL

Contact:

Sewerynów 7

phone: +48 22 826 71 08

info@hostel-helvetia.pl

www.hostel-helvetia.pl

Overview & prices:

- Bed in Dormitory Room for 8 People – from 59PLN (14€)
- Bed in Dormitory Room for 6 people – from 65PLN (15€)
- Bed in Female Dormitory Room for 3 people – from 72PLN (17€)
- Bed in Dormitory Room for 4 people – from 49PLN (11€)
- Private twin room without bathroom – from 190PLN (44€)
- Private single with bathroom – from 226PLN (52€)
- Private twin room with bathroom – from 226PLN (52€)
- Private triple room without bathroom – from 237PLN (55€)
- Private 4 persons room with bathroom – from 396PLN (91€)

Basic breakfast included. All guests have access to the hostel's kitchen and the common room. WiFi is available in all areas and is free of charge.

Check in: 3:00 pm. Check out: 11:00 am.

Photos:



Map:



Distance to University of Warsaw – 400m

TATAMKA HOSTEL

Contact:

Tamka 30

Phone: +48 22 826 30 95

tatamka@hostel.pl

www.tatamkahostel.pl

Overview & prices:

- Bed in Dormitory Room for 8 People – from 52PLN (12€)
- Bed in Dormitory Room for 6 People – from 47PLN (11€)
- Bed in Dormitory Room for 4 People – from 47PLN (11€)
- Single Room – from 150PLN (35€)
- Twin Room – from 127PLN (29€)
- Triple Room – from 183PLN (42€)
- 4-bed-room – from 197PLN (45€)
- Apartment (4 persons) – from 260PLN (60€)

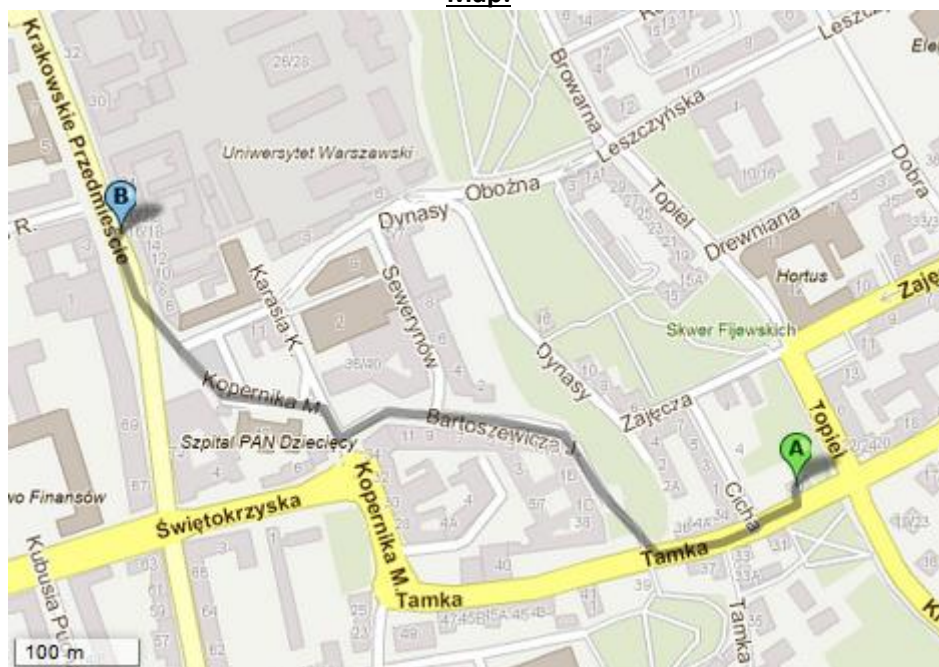
Fully equipped kitchen and free Wi-Fi.

Check in: 2:00 pm. Check out: 11:00 am.

Photos:



Map:



Distance to University of Warsaw – 730m

KANONIA HOSTEL

Contact:

Jezuicka 2

Phone: +48 22 635 06 76

hostel@kanonia.pl

www.kanonia.pl

Overview & prices:

- Bed in Dormitory Room for 8 People – from 45PLN (10€)
- Room for 2 people – from 150PLN (35€)
- Room for 2 people, with bathroom – from 170PLN (39€)
- Room for 3 people – from 180PLN (42€)
- Room for 3 people, with bathroom – from 210PLN (48€)
- Room for 4 people – from 200PLN (46€)
- Room for 4 people, with bathroom – from 220PLN (51€)
- Room for 5 people – from 225PLN (52€)
- Room for 5 people, with bathroom – from 250PLN (58€)
- Apartment (2 persons) – from 210PLN (48€)
- Apartment (3 persons) – from 260PLN (60€)
- Apartment (4-5 persons) – from 280PLN (65€)

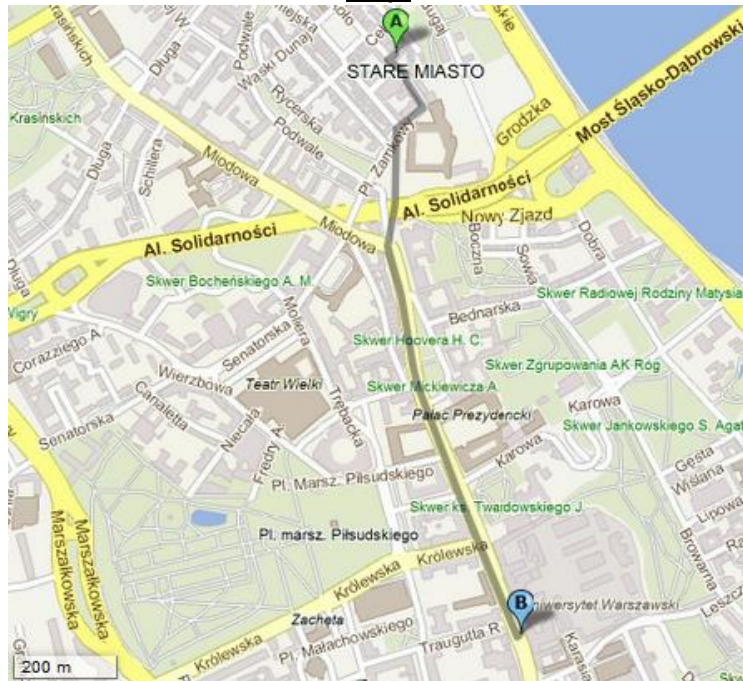
Kitchen and free Wi-Fi.

Check in: 2:00 pm. Check out: 10:00 am.

Photos:



Map:



Distance to University of Warsaw – 1260m

NEW WORLD ST. HOSTEL

Contact:

Nowy Świat 27

Phone: +48 22 828 12 82

hostel@nws-hostel.pl

www.nws-hostel.pl

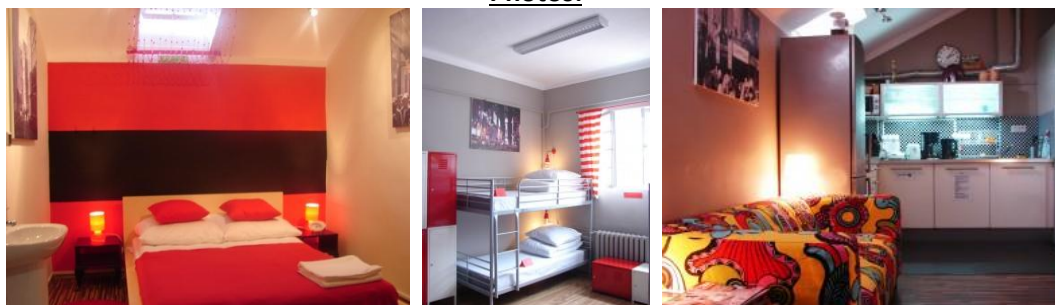
Overview & prices:

- Bed in Dormitory Room for 10 People – from 42PLN (10€)
- Bed in Dormitory Room for 6 People – from 54PLN (12€)
- Bed in Dormitory Room for 4 People – from 57PLN (13€)
- Double Room – from 174PLN (40€) (breakfast included)

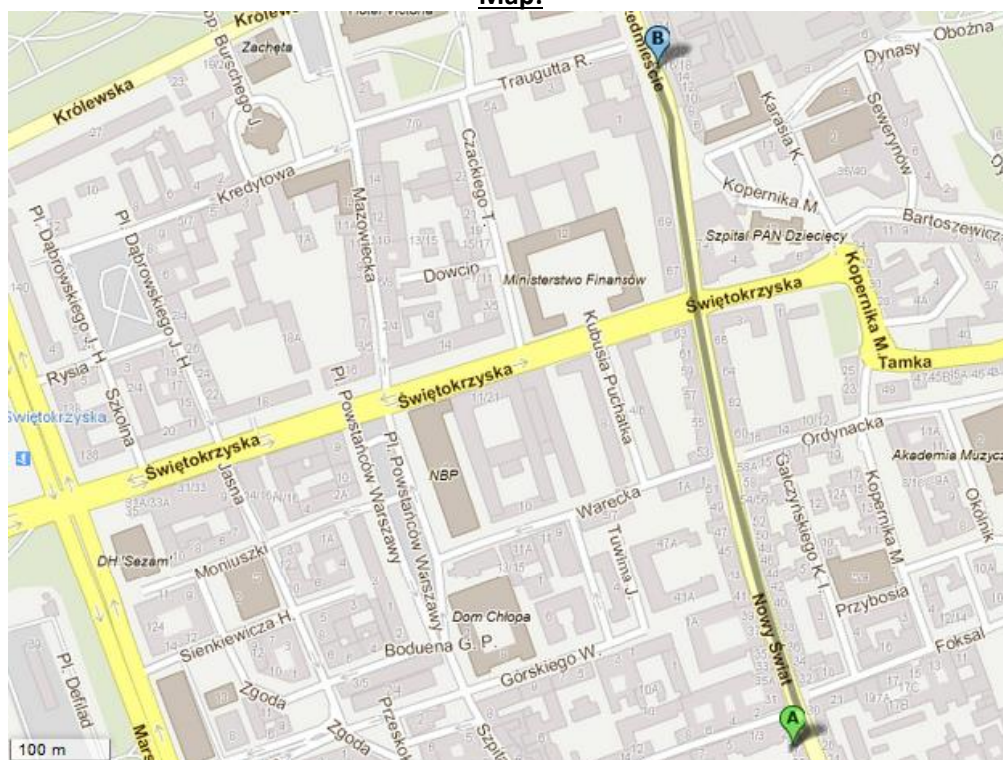
Kitchen, board games, free maps and guides and Internet access.

Check in: 3:00 pm. Check out: 12:00 am.

Photos:



Map:



Distance to University of Warsaw – 720m

AGA HOSTEL

Contact:

Topiel 27 I. 14

Phone: +48 694 372 321

rezerwacje@agahostel.pl

www.agahostel.pl

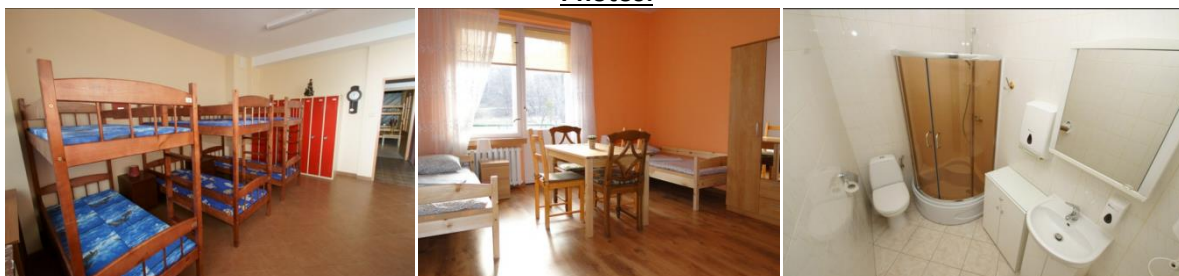
Overview & prices:

- Bed in Dormitory Room for 8 People – from 40PLN (9€)
- Bed in Dormitory Room for 6 People – from 45PLN (10€)
- Bed in Dormitory Room for 4 People – from 55PLN (13€)
- Triple Room – from 100PLN (23€)
- Twin Room – from 130PLN (30€)

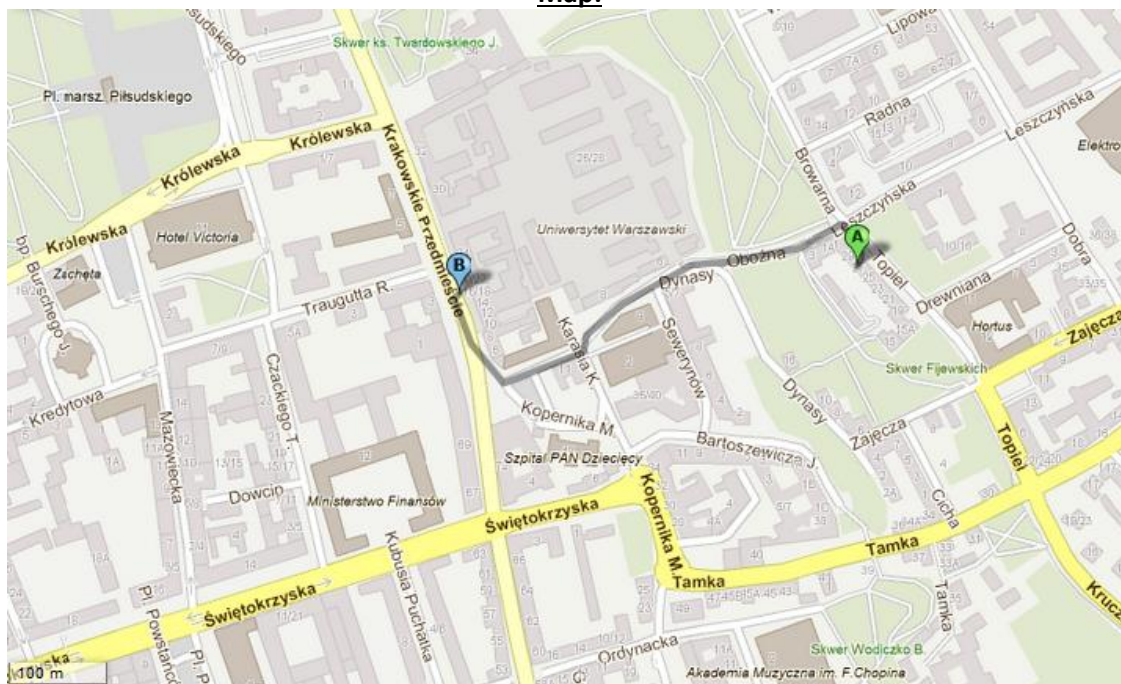
Fully equipped kitchen, high standard common bathroom, hair dryer, iron and ironing board and free Wi-Fi.

Check in: 3:00 pm. Check out: 12:00 am.

Photos:



Map:



Distance to University of Warsaw – 570m

OKI DOKI HOSTEL

Contact:

Dąbrowskiego Square 3
Phone: +48 22 828 01 22

okidoki@okidoki.pl

www.okidoki.pl

Overview & prices:

- Bed in Dormitory Room for 8 People – from 29PLN (7€)
- Bed in Dormitory Room for 6 People – from 32PLN (7€)
- Bed in Dormitory Room for 4 People – from 39PLN (9€)
- Bed in Dormitory Room for 4 People, with bathroom – from 45PLN (10€)
- Bed in Dormitory Room for 3 People – from 45PLN (10€)
- Single Room – from 100PLN (23€) (breakfast included)
- Double/Twin Room – from 128PLN (30€) (breakfast included)
- Double/Twin Room, with bathroom – from 154PLN (36€) (breakfast included)

Fully equipped kitchen, safety deposit box and free Wi-Fi.

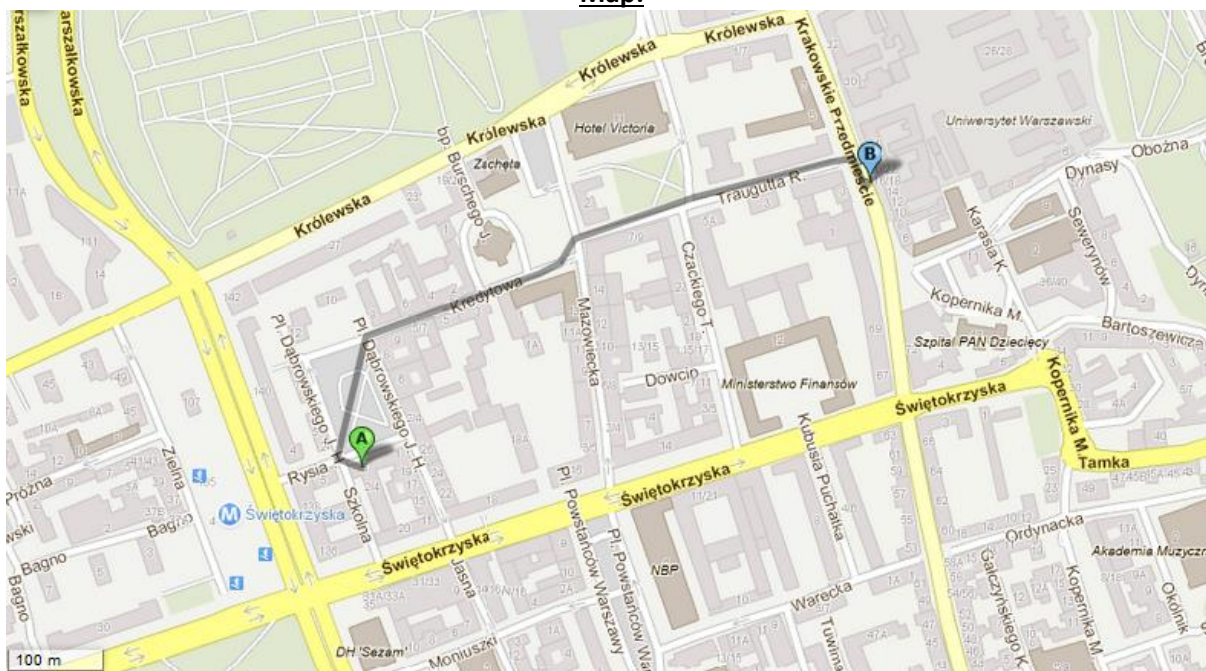
Pets allowed.

Check in: 3:00 pm. Check out: 11:00 am.

Photos:



Map:



Distance to University of Warsaw – 770m